

# WETHERTEX<sup>®</sup>

PERFORMANCE COATINGS

## LD77 & HD77 Pliolite Coating Systems

ADVANCED TECHNOLOGY

*Protect your home 365 days a year  
with Wethertex Wall Coatings*



Registered  
Contractor



*Wethertex performance coating systems are only  
sold through our registered contractor network*

40 YEARS PROVEN DURABILITY

TRANSFORM YOUR HOME

19 DESIGNER COLOURS

## We need to protect our properties

*Our house is the biggest investment most of us make. Adding value to it, and protecting it from the British weather, is important.*

### WEATHER DAMAGE

Constant attack by water, frost and sun can seriously degrade traditional paint and render finishes, ultimately causing them to fail. Even bricks can become damaged and delaminate. This can lead to damp problems, damage to the wall construction itself, and potentially extremely expensive remedial works.

### WETHERTEX IS THE SOLUTION








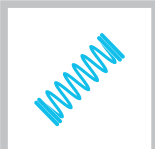
- Protect your home from all weathers
- Give your home a fresh new look
- Add value to your property
- Stop future maintenance costs



WETHERTEX ADVANCED TECHNOLOGY WALL COATING SYSTEMS WILL PROTECT YOUR PROPERTY FROM EXTREME WEATHER CONDITIONS THROUGHOUT THE YEAR. SCIENTIFICALLY DEVELOPED AND RIGOROUSLY TESTED TO WORK IN EXCESS OF 40 YEARS.



## Why should you choose WETHERTEX advanced technology?

	<b>Total waterproofing</b>		<b>Very low maintenance</b>
	<b>Complete colour stability</b>		<b>Unbeatable bond strength</b>
	<b>Algae resistant</b>		<b>Eliminates painting</b>
	<b>Allows the wall to breathe</b>		<b>Flexibility that helps prevent cracking</b>

WETHERTEX has protected 100,000 properties through the UK for over 40 Years.



## Finish

### DISCLAIMER:

Please note that all colours within this colour selector have been displayed as accurately as the print process will allow and that slight variations in colour will possibly occur. Please request specification sample before final colour is accepted.



*LD77 Pliolite Light Texture Coating*

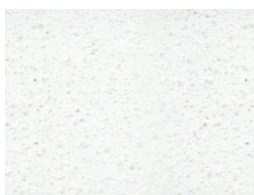


*HD77 Pliolite Heavy Texture Coating*

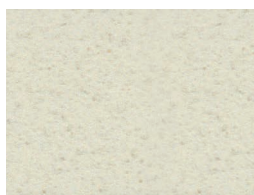
## Colour Selector

*Colour plays a vitally important role in the world in which we live; colour can sway thinking, change actions, and cause reactions.*

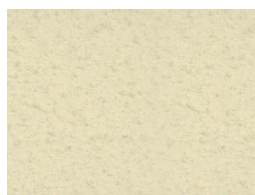
Our colours have been created and designed in collaboration with leading UK based colour technicians, architects and designers to put together a palette of pastel tones that will allow you to design a building freely and creatively in a sympathetic approach to its surroundings.



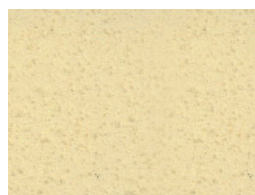
*Chalk White*



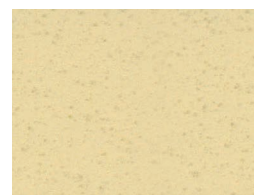
*Antique White*



*African Ivory*



*Butter Cream*



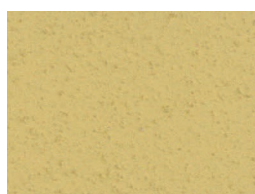
*Travertine Stone*



*Sand Dune*



*Old Gold*



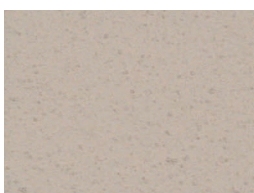
*Dusk & Dawn*



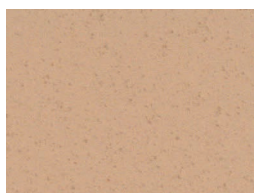
*Fired Copper*



*Earth Taupe*



*Mallow Rose*



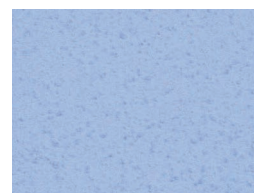
*Orchard Pink*



*Red Sandstone*



*Fired Earth*



*Blue Sky*



*Mountain Grey*



*Moon Stone*



*Mint Green*



*Sea Mist*

# Applying the Wethertex LD77/HD77 systems

Application is in 6 stages:

## STAGE

# 01



### Wall Preparation, Cleaning and Protection

When renovating the exterior of your home, preparation is key to creating a flawless, long lasting finish. All surfaces must be thoroughly cleaned down by either power washing or, if required, wire brush. Years of grime, mould, algae and any loose or flaking paintwork or other contaminants must be removed.

This process will show up any areas that may need repair. Once this is complete, one coat of Wethertex C10 Fungicidal Wash should be applied to eliminate any algae growth that may affect the result. All doors, windows, paths and surrounding areas, that are not to be coated, should be protected from the permanent effects of Wethertex before application begins.



## STAGE

# 02



### Stabilising Wall Repairs

Once any old, loose material has been removed from the wall and any remedial building work carried out, advanced Wethertex X71 or GRC Base Coat should be applied to reinforce and waterproof the repairs.

Wethertex X71/GRC Basecoats are modified with dual polymer technology, making them very flexible and strong in order to stabilise repairs, inhibit cracking and ensure a long life for the substrate. Apply one coat to 5mm thick.



## STAGE

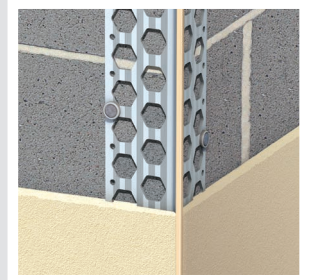
# 03



### Fixing of plastic beads

PVCu beads are now fixed to all corners, angles and finished edges of the areas being rendered (including window reveals), they are attached using non-corroding fixings. These beads provide perfect edges for the applicator to work to, the walls are now ready for further base coat trowel render & mesh applications.

The use of PVCu beading removes any potential for future corrosion and therefore unsightly rust will never 'bleed' through the finished coloured render and stain the walls, as is common with traditional beading methods.



## STAGE

# 04



### Reinforcement

Apply fibre-reinforcing mesh, ensuring that it is overlapped 100mm at the mesh joints.



Additional fibre-reinforcing mesh stress patches of 500 x 300mm should be added at all openings ie windows and doors. Additional fixings may be required depending on the underlying substrate.

## STAGE

# 05



### Completion of BaseCoat

Trowel apply a 2nd pass of X71/GRC Basecoat over the fibre reinforcing mesh, to approx. 5mm thick and leave for 2-8 hours before being wet sponge float finished and allowed to set.



## STAGE

# 06



### Wall Coating

The final stage is to apply the Wethertex LD77/HD77 coating, in your choice of colour.

Apply to a thickness of 1.5-2mm with the help of a steel trowel. To create the texture, load a lambs wool roller generously and apply with minimum pressure in short, slow strokes, covering small areas at a time.

